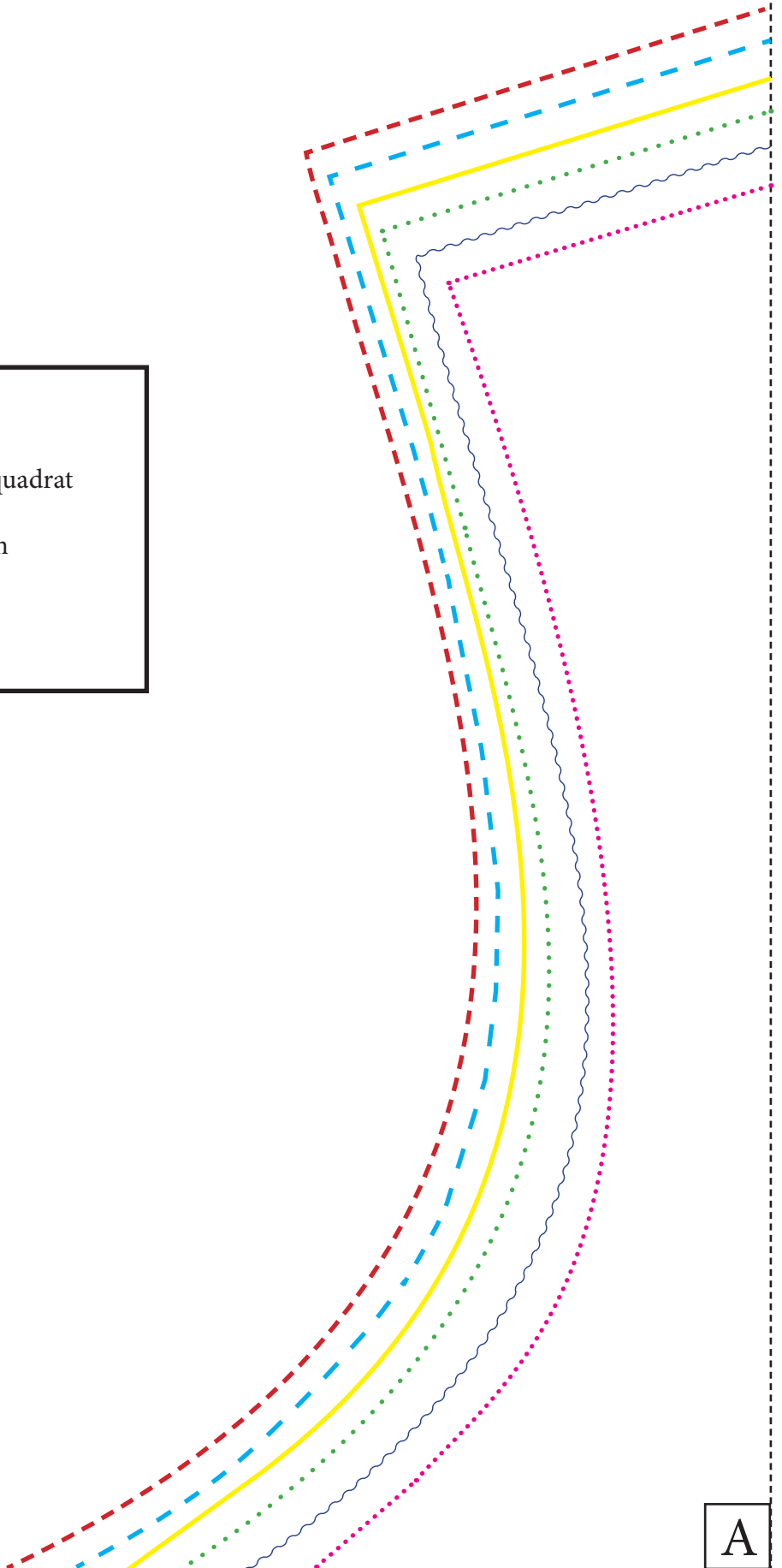
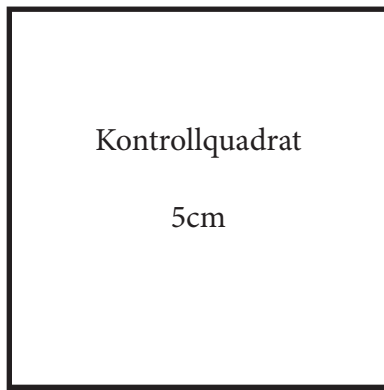
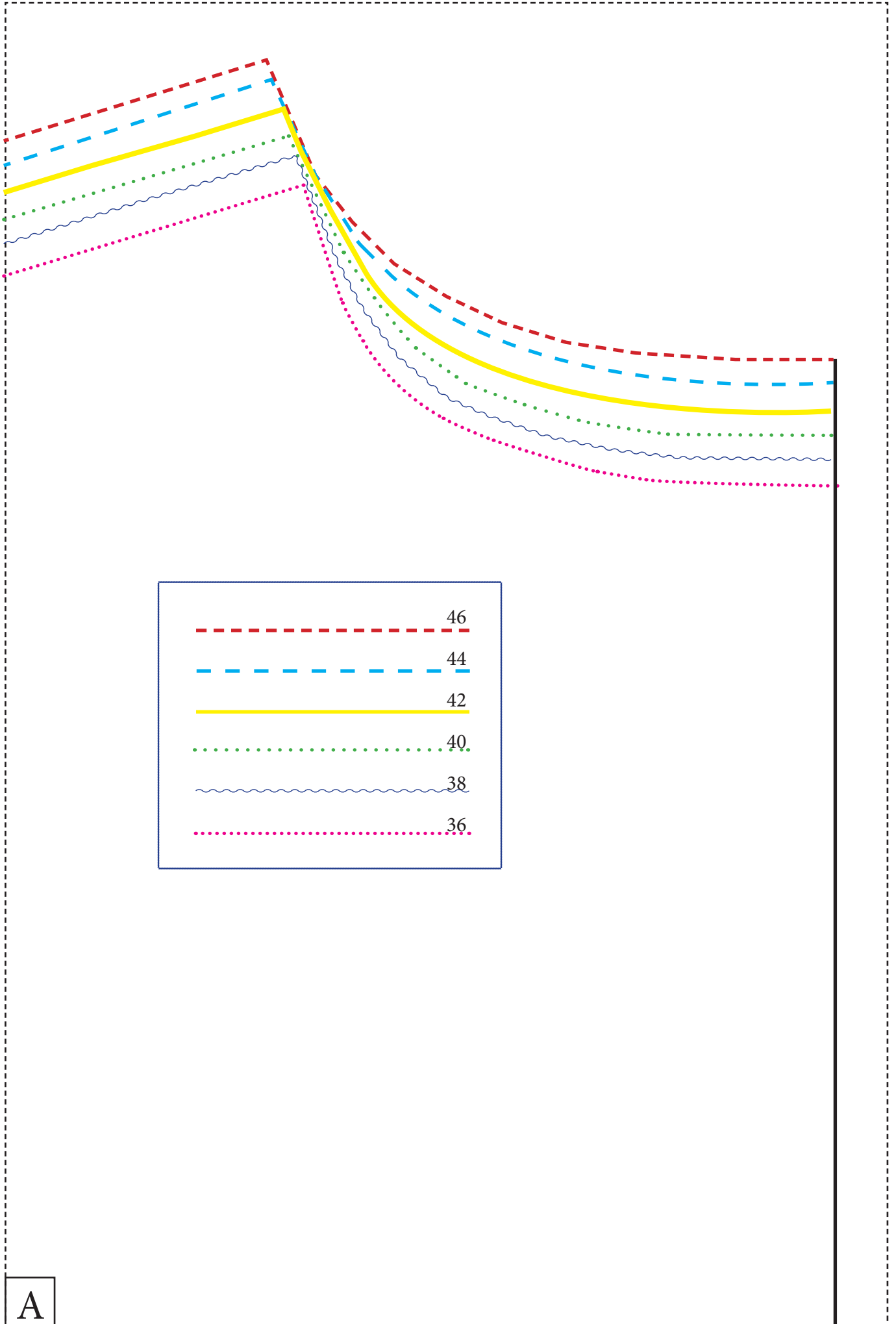


# Kleid Cleo

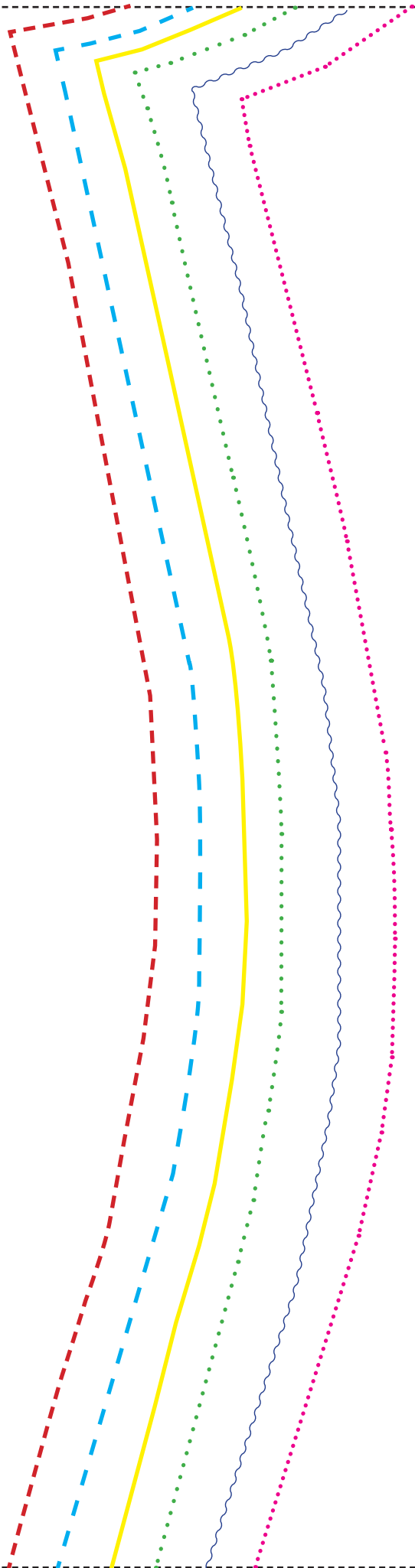
[www.schneidertochter.de](http://www.schneidertochter.de)





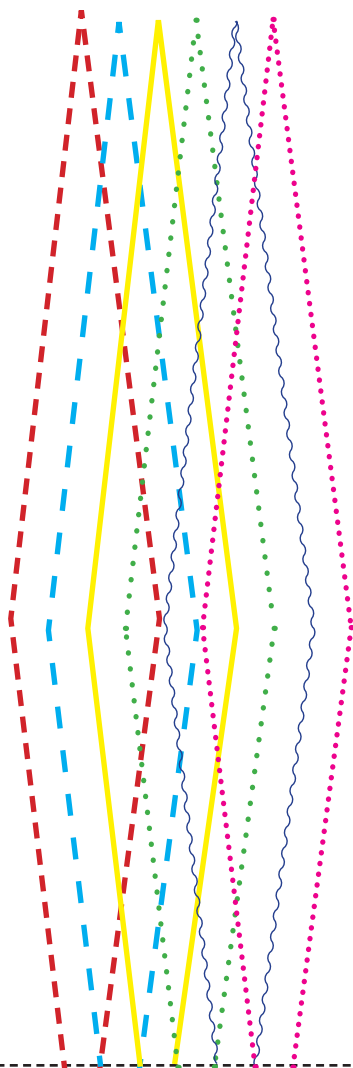
A

B



A

Abnäher



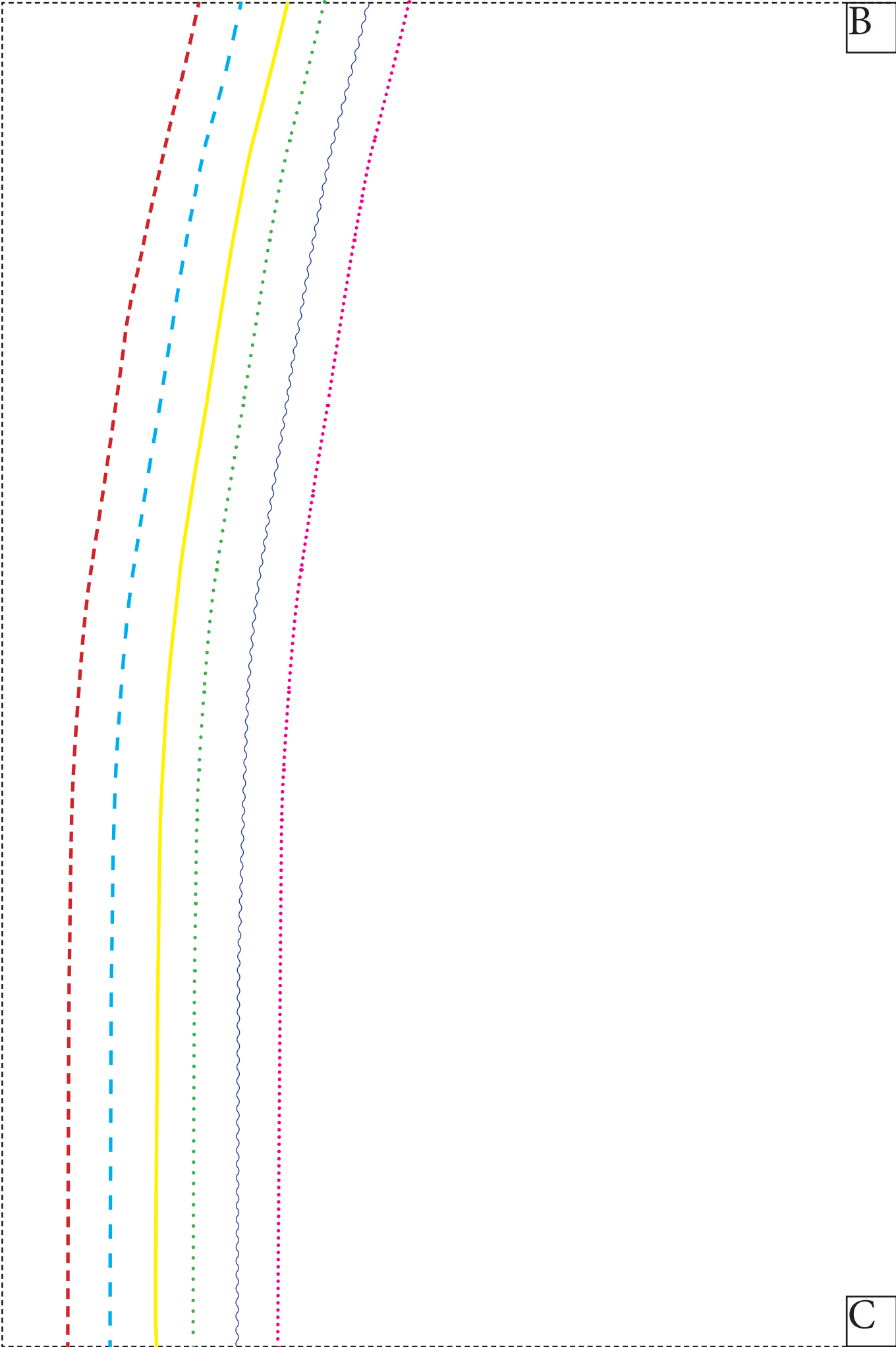
Taille



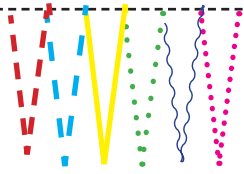
B

B

C



B



Knips

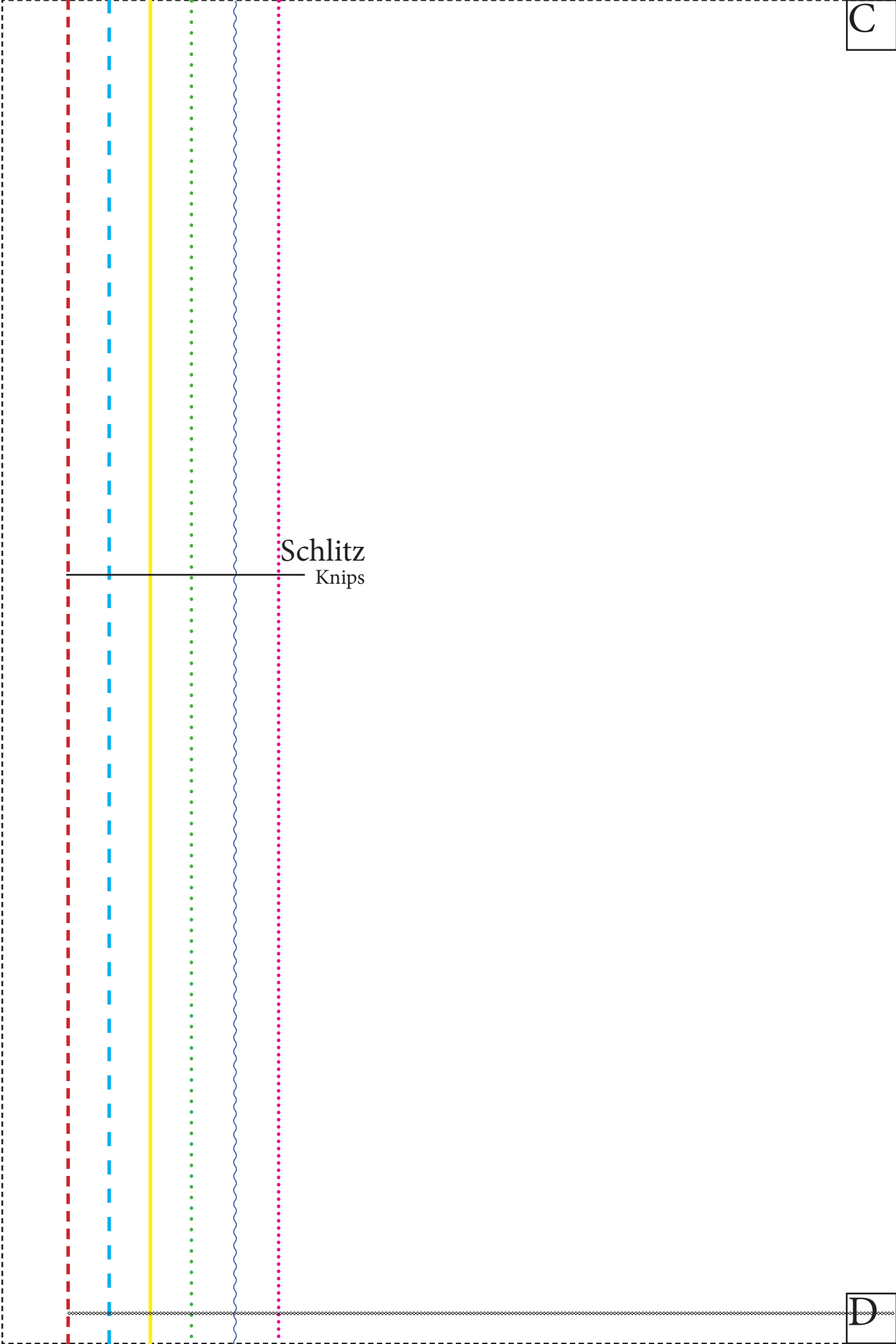
Reissverschluss

C

C

D

Schlitz  
Knips



C

# Rückenteil

2x gegengleich aus Stoff

D

Kurzversion



D

46

44

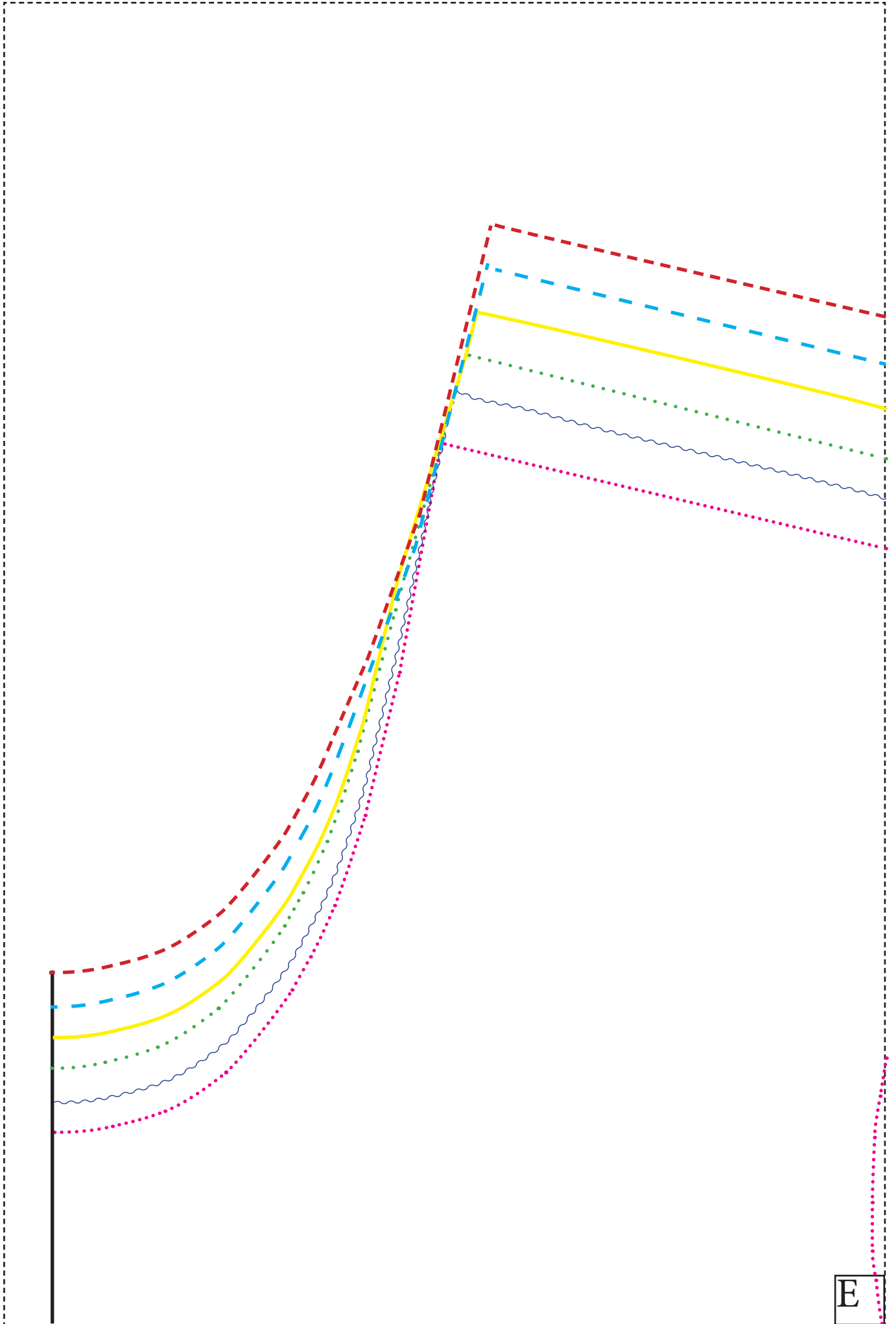
42

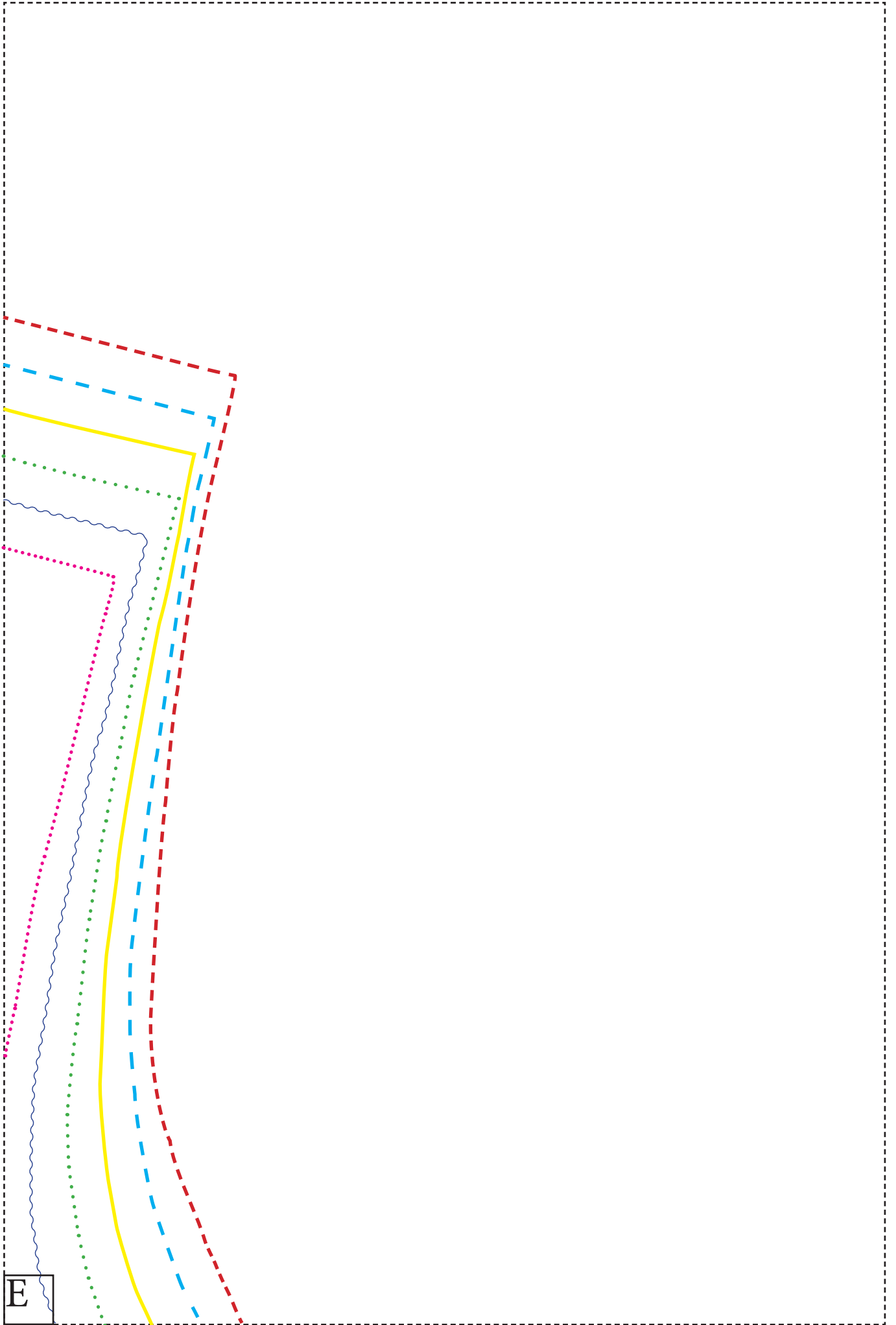
40

38

36

D

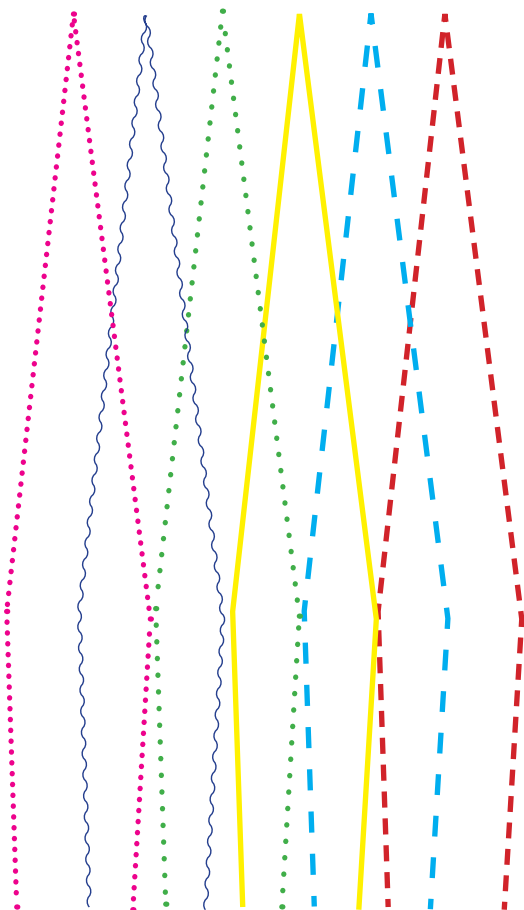




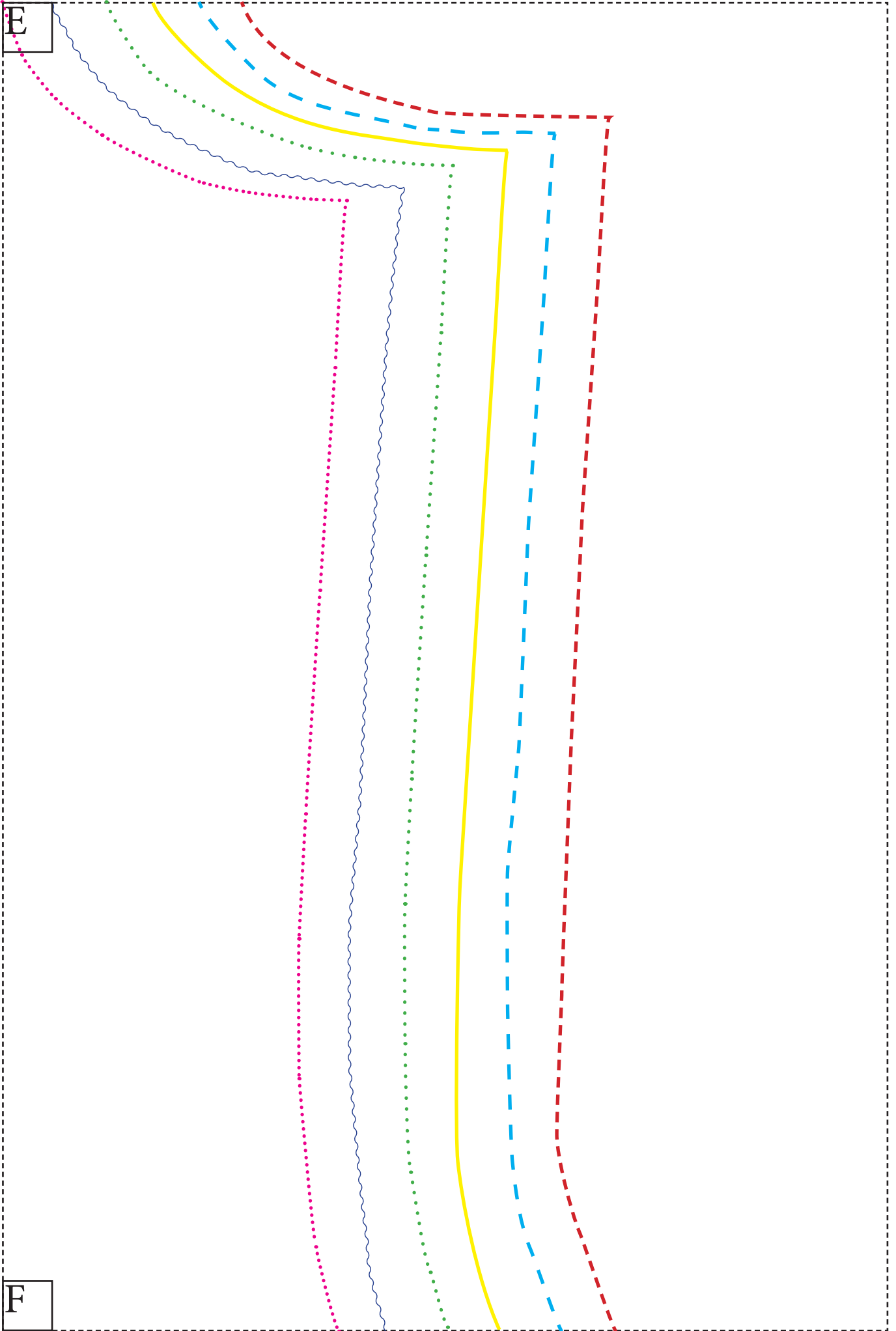
E

E

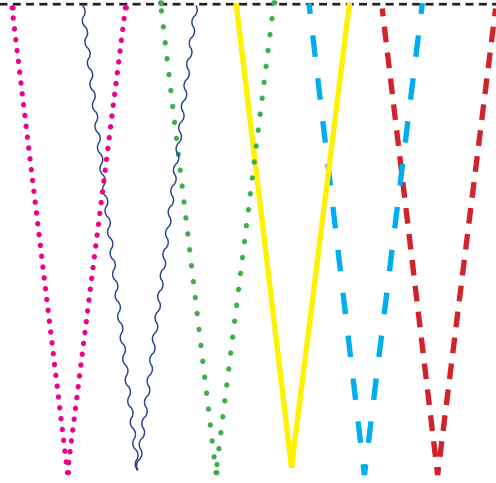
Abnäher



F



F



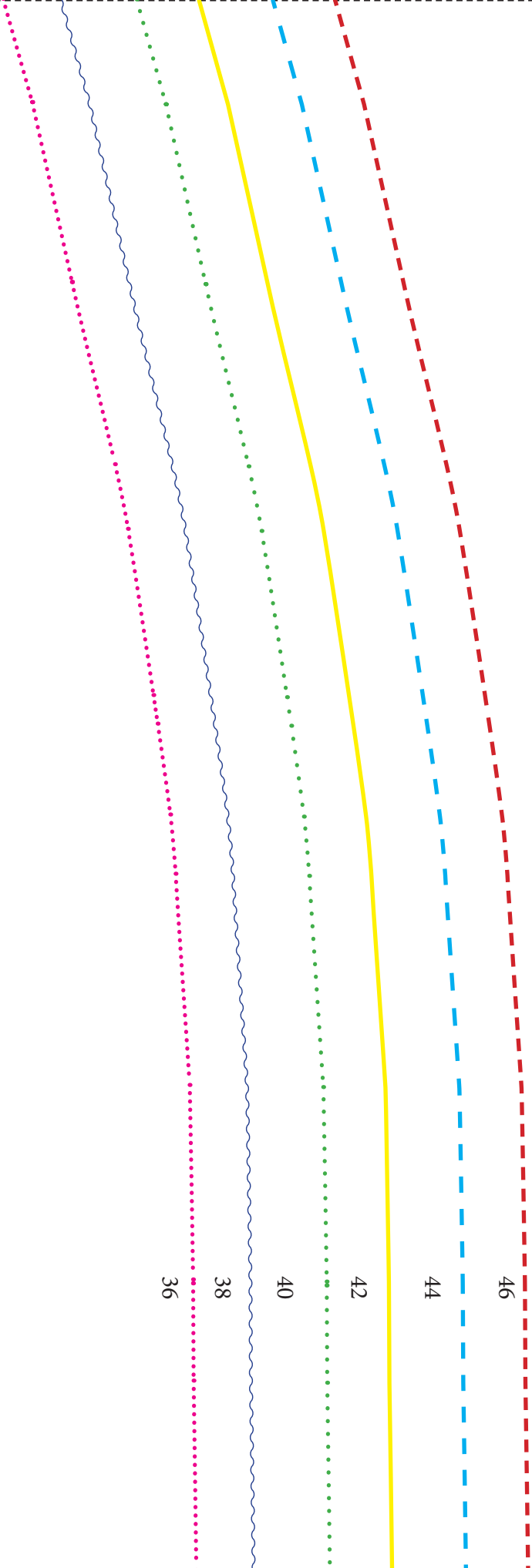
# Vorderteil

1x aus Stoff im Stoffbruch

G

F

G





G

Stoffbruch

H

G

H

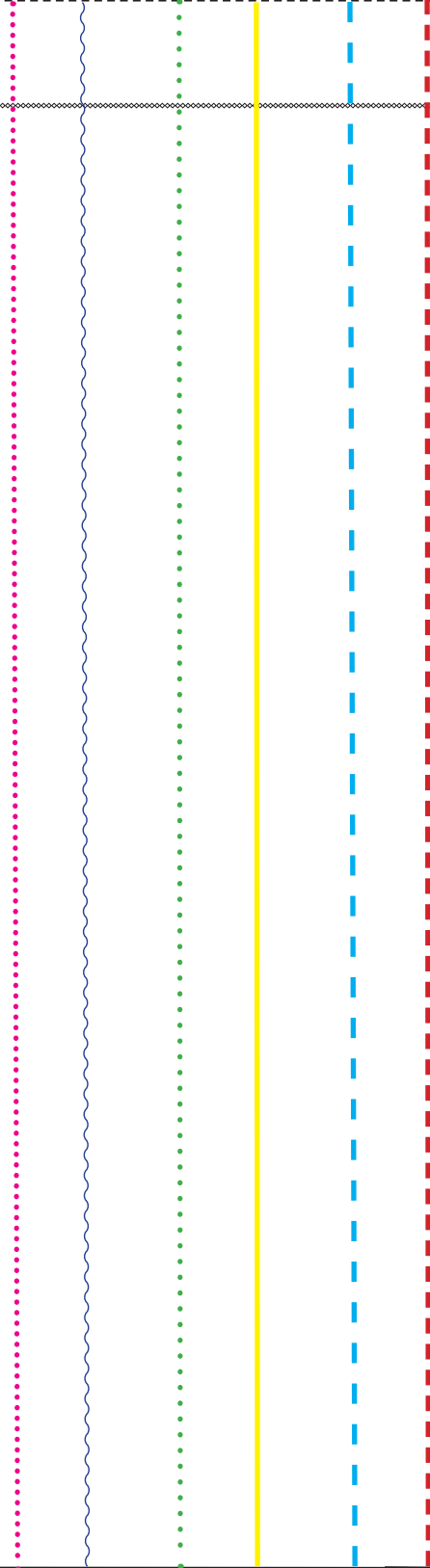
Schlitz  
Knips

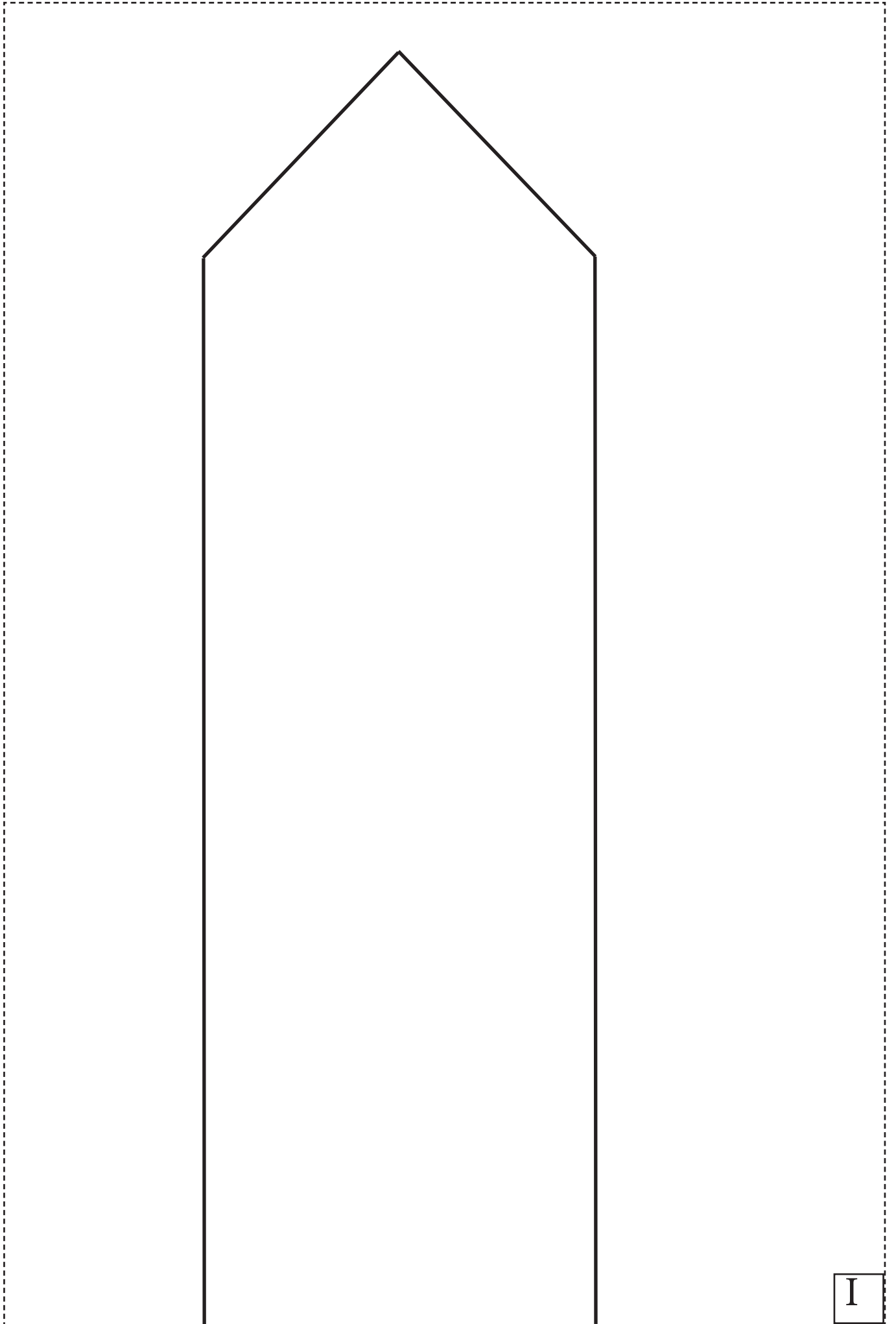




H

Kurzversion

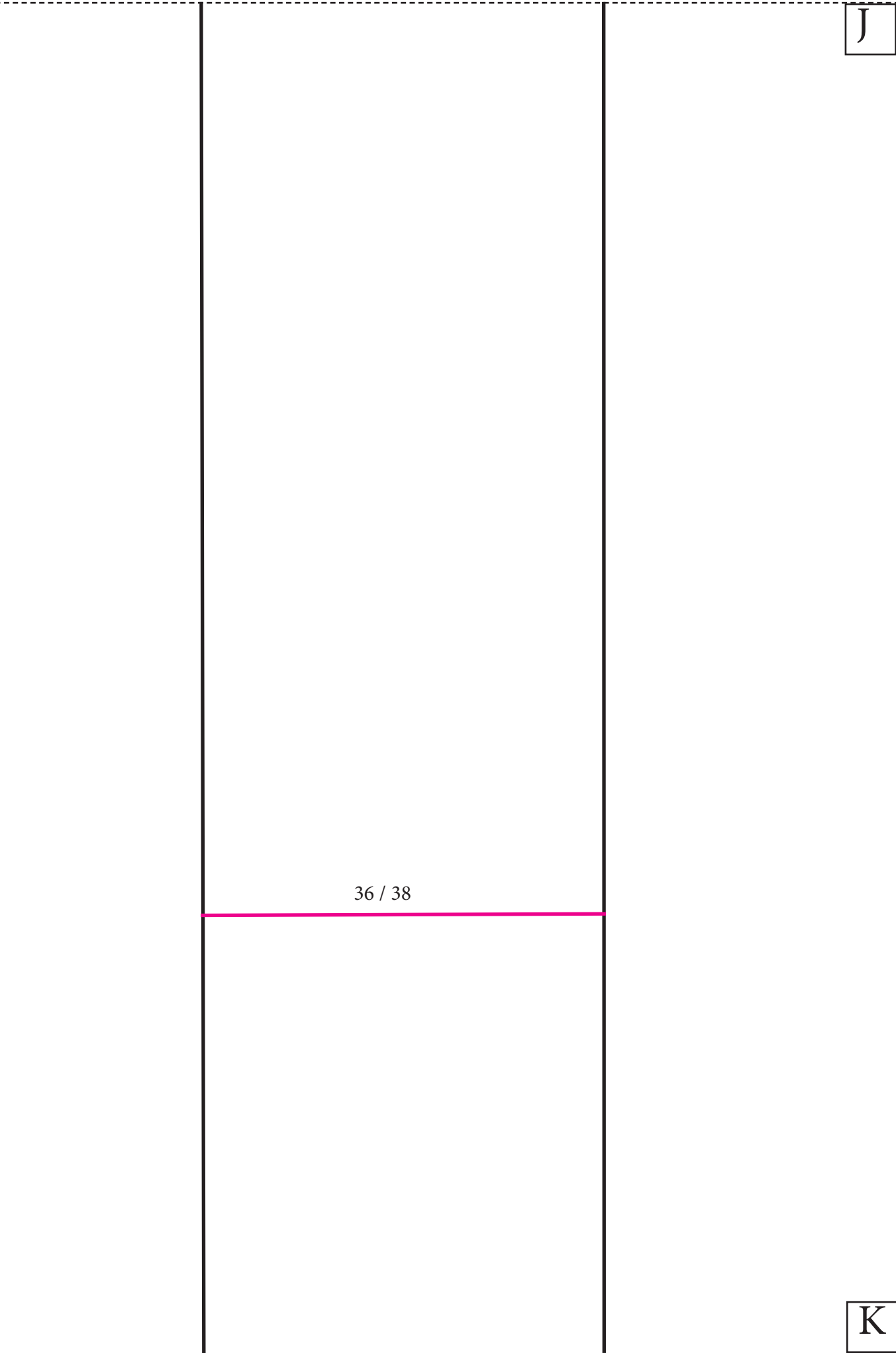




I

Band  
2x Stoff

J



36 / 38

J

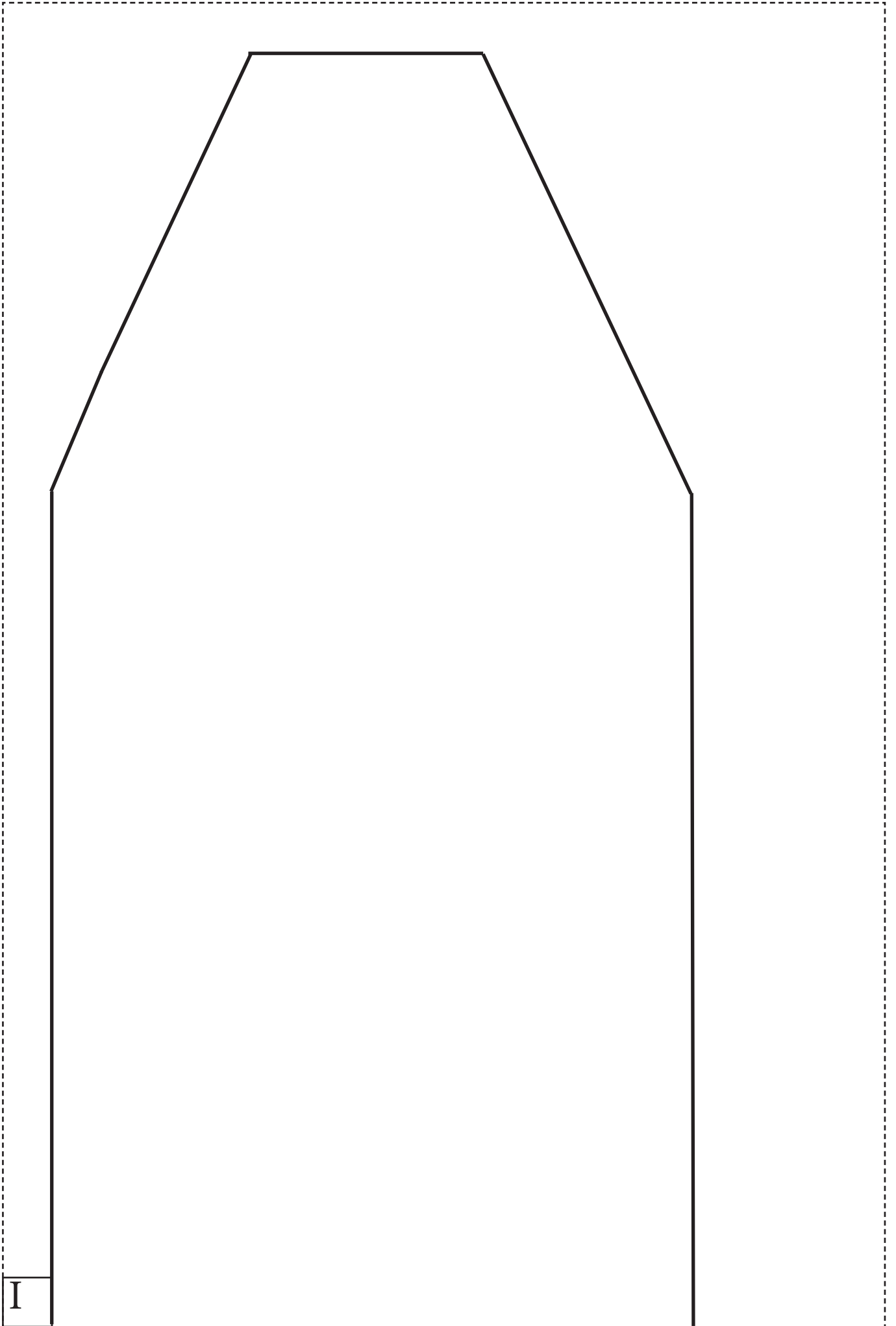
K

40 / 42

K

44 / 46





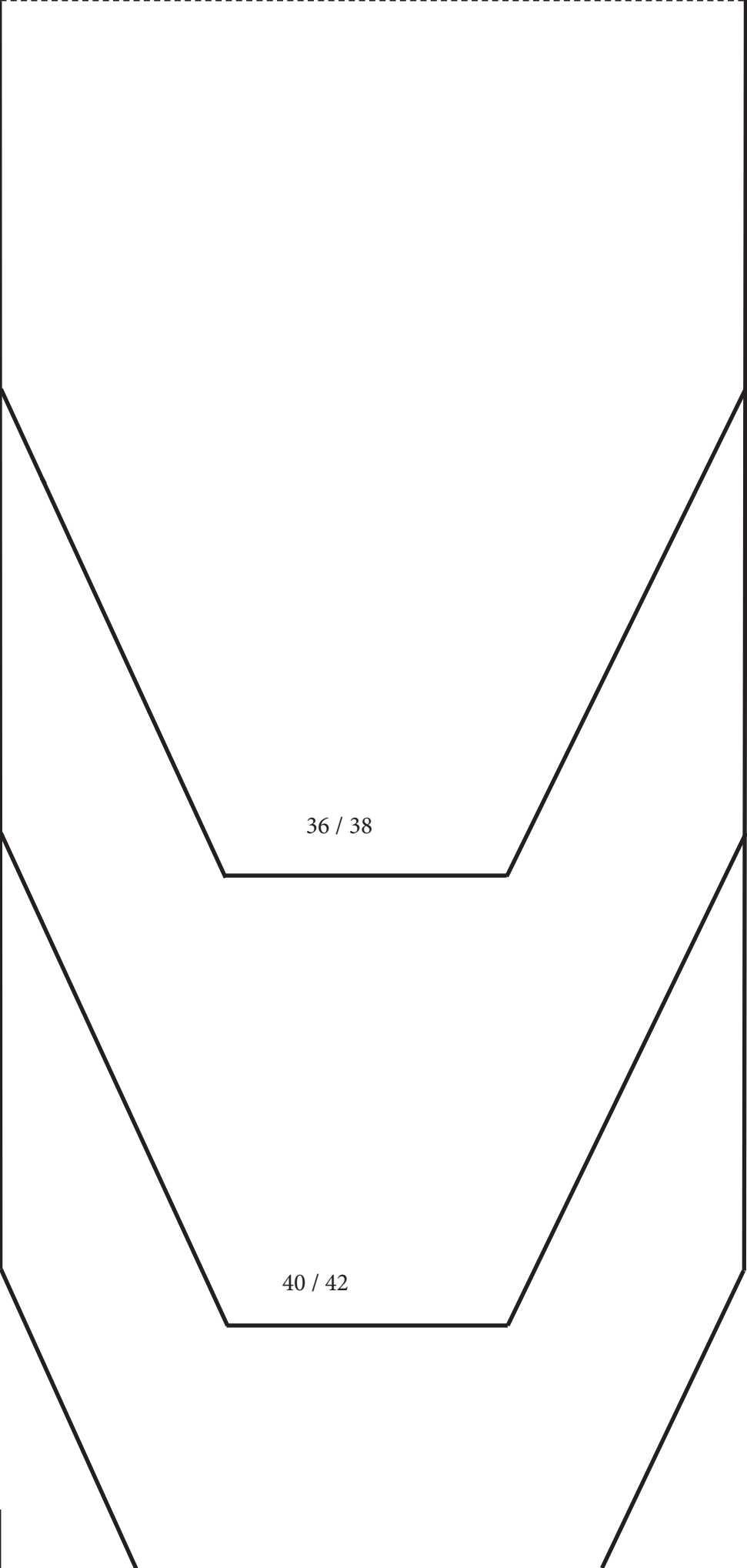
I

# Gürtel

2x Stoff  
1x Vlies

J

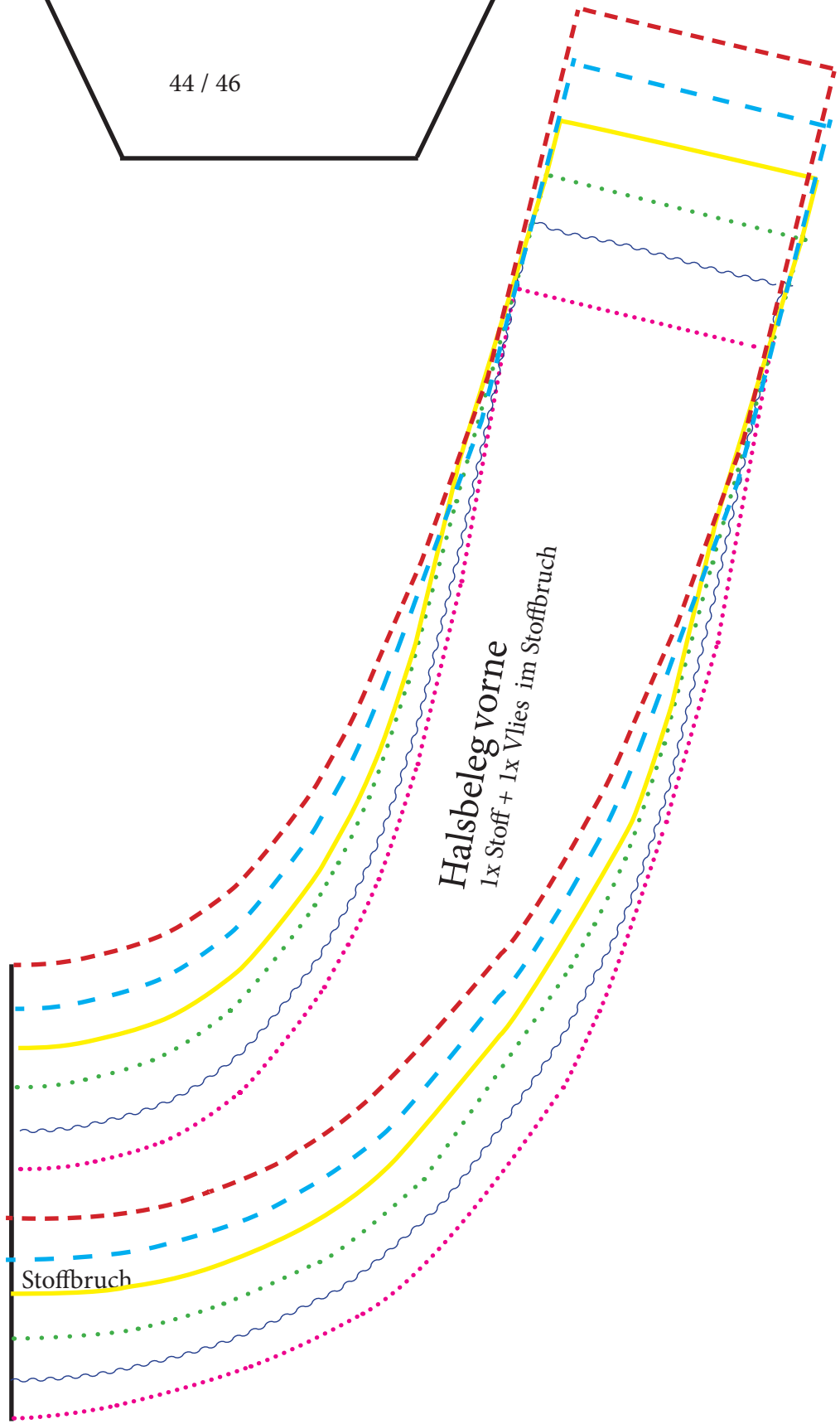
J

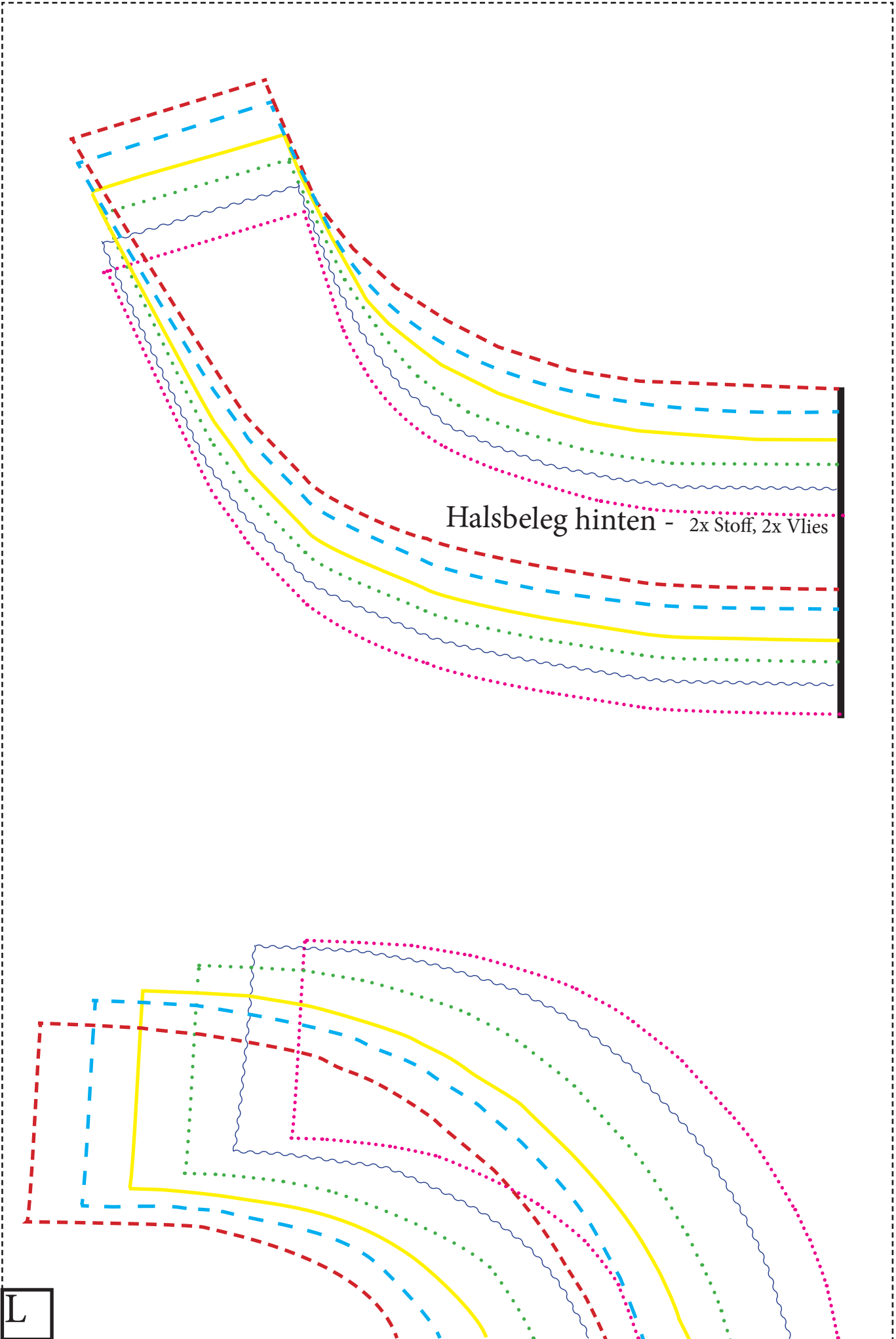


36 / 38

40 / 42

K

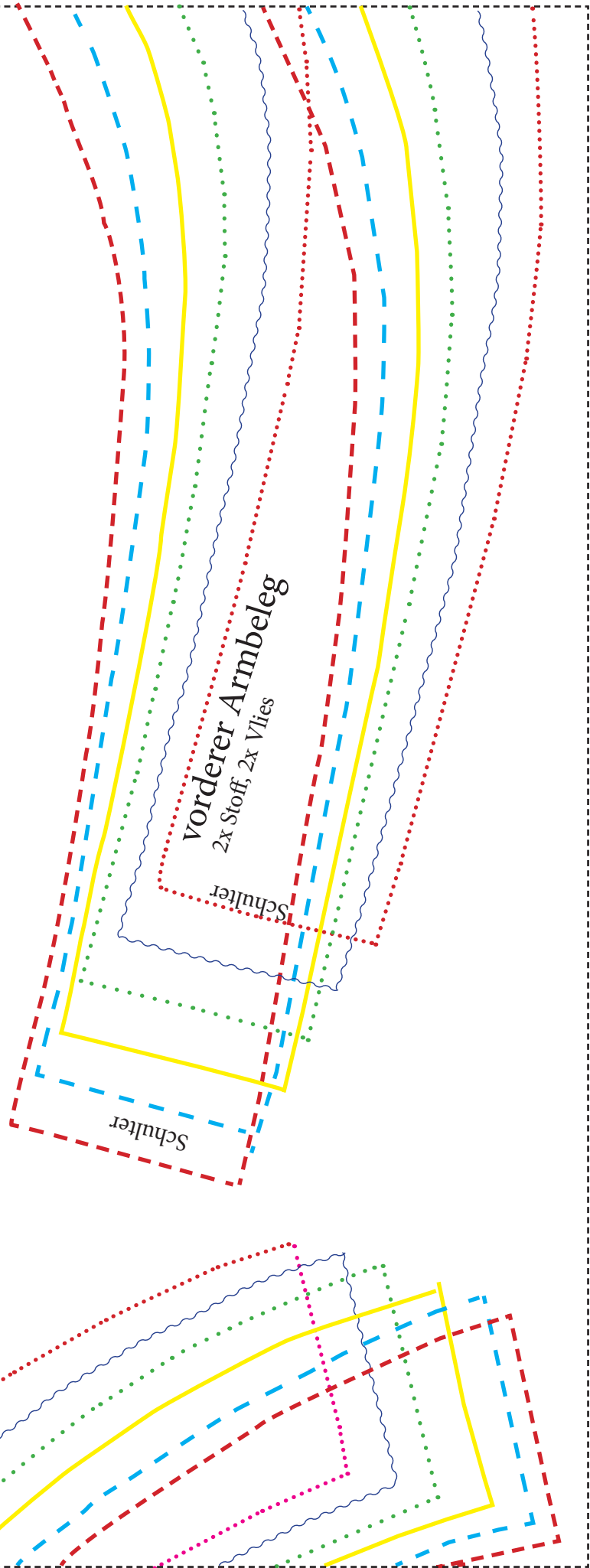




Halsbeleg hinten - 2x Stoff, 2x Vlies

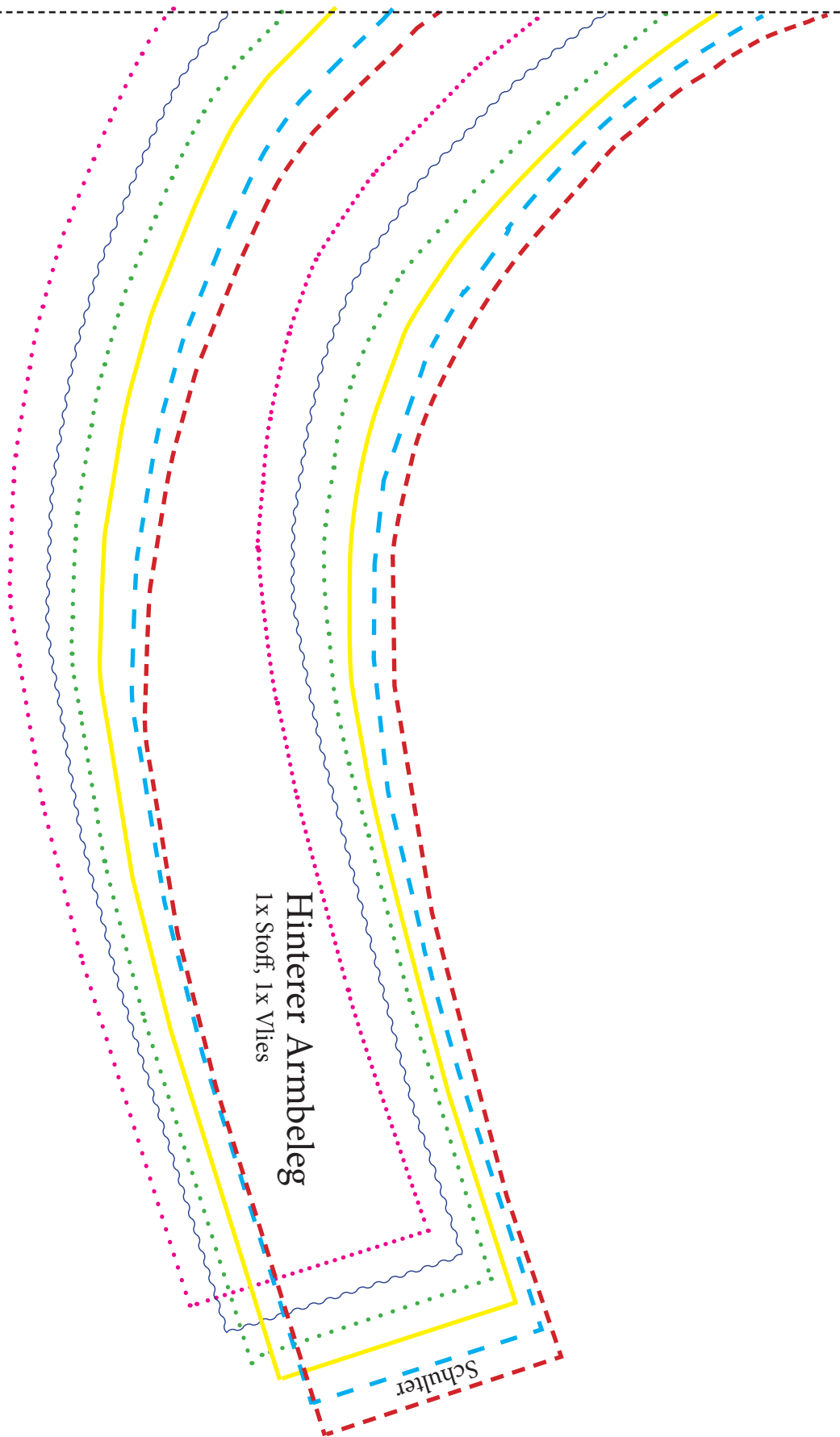
L

L



M

M



Hinterer Armbeleg  
1x Stoff, 1x Vlies

Schulter