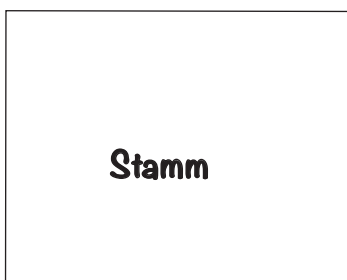
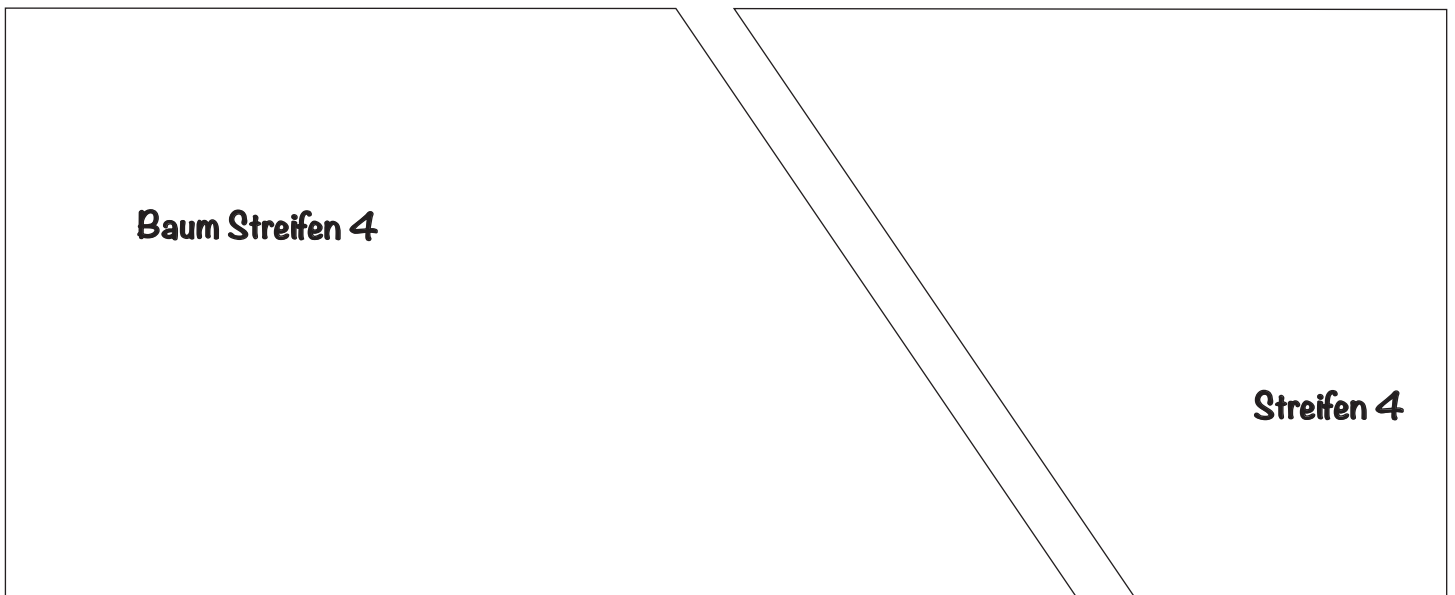
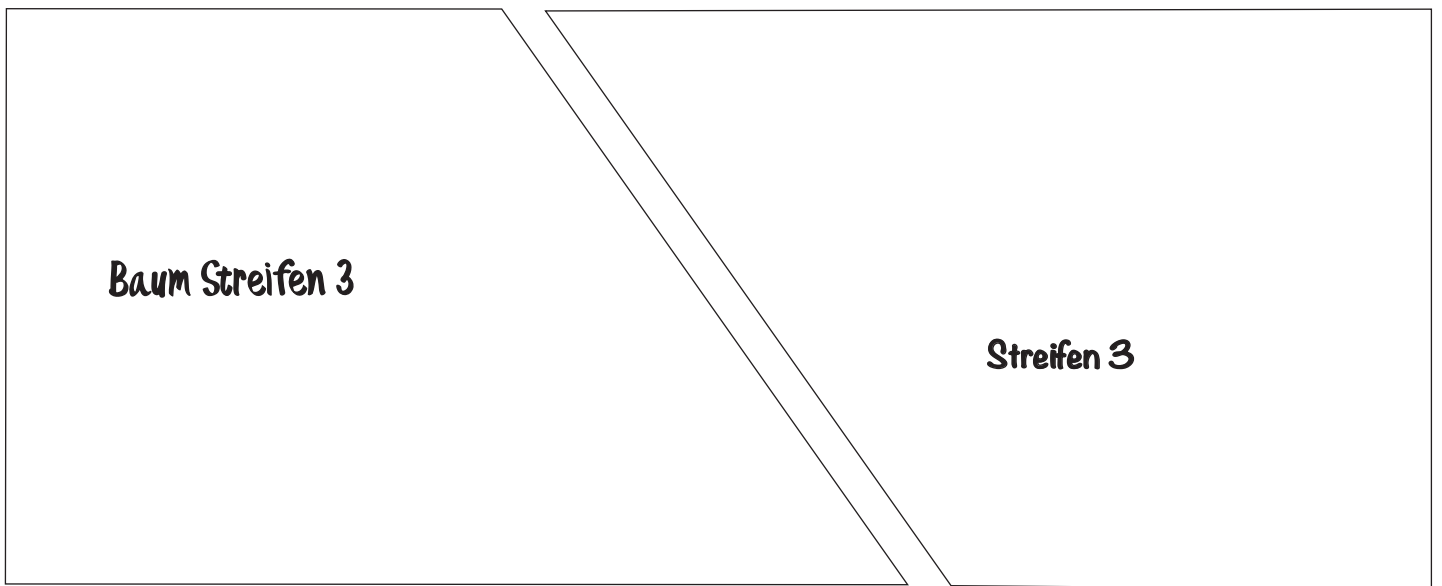


*Funkelfaden*

# Bestecktasche Weihnachtsbaum

Gratis Nähanleitung unter [Funkelfaden.de](http://Funkelfaden.de)



The diagram consists of three overlapping rectangular regions. The top region is a simple rectangle labeled 'Streifen 1'. The middle region is a rectangle that overlaps the bottom edge of 'Streifen 1' and has a diagonal cut on its left side. The bottom region is a triangle that overlaps the bottom-left corner of the middle region. The labels are centered within their respective regions.

**Streifen 1**

**Streifen 2**

**Baum Streifen 2**

**Rückseite Besteckset**

Klebefläche

**Hinterer Bereich Baum**

Klebefläche